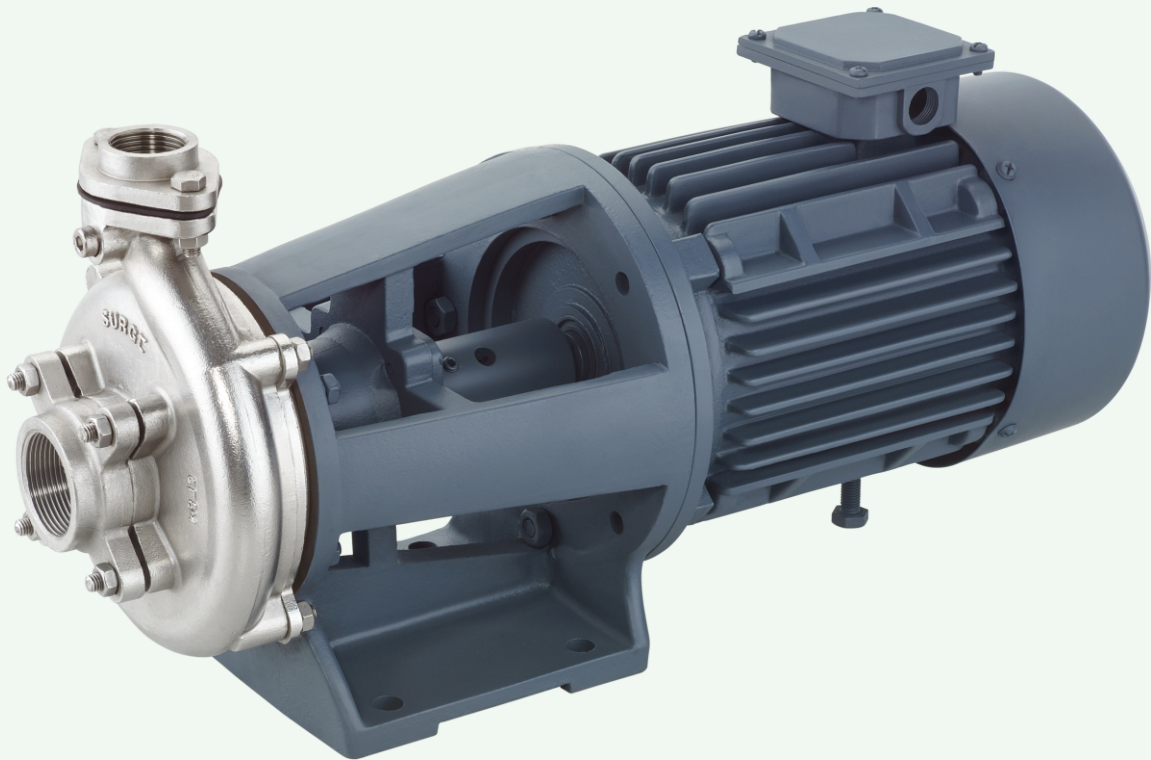




ISO 9001
CERTIFIED COMPANY



STAINLESS STEEL CENTRIFUGAL PUMP

Features :

- High efficiency and high discharge rate at less power consumption.
- Casing and Impeller are made of S.S. 316.
- Anticorrosive Stainless Steel shaft.
- Impeller is dynamically balanced for low noise and longer bearing life.
- Long life due to replaceable wearing parts.
- Easy spares availability.
- Suction lift up to 8 meters.
- Extremely simple in construction, Easy maintenance and Easy gland packing replacement.
- Available in various pipe sizes.
- Sealing arrangement with mechanical seal is standard supply, gland packing arrangement available on request.
- Mechanical seal with carbon - ceramic with S.S. Spring.
- Gland packing (If fitted with) TTFE.
- SCFZ series suitable for B5 type IEC motors.
- All models are available in 60 Hz on request.

Range :

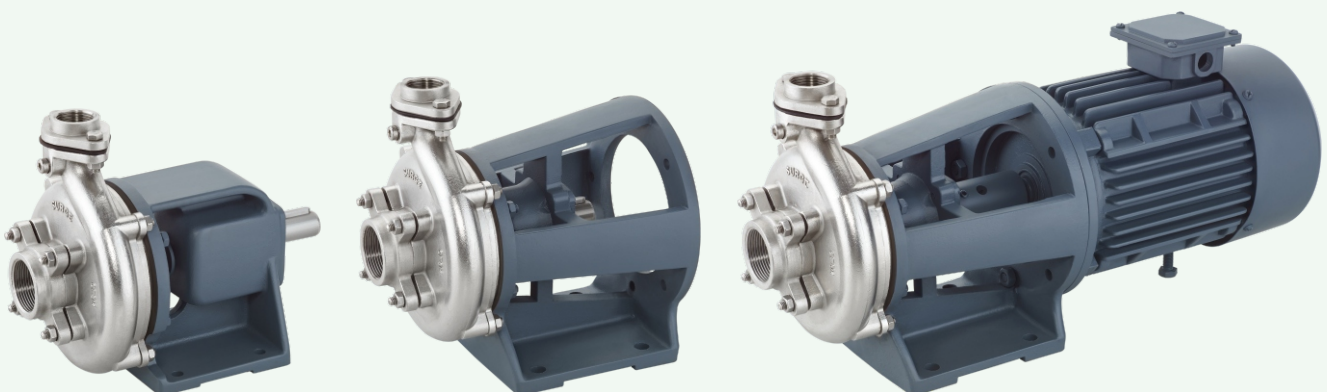
- Pressure : Up to 2.5 kg/cm²
- Discharge : 100 LPM to 600 LPM
- Pipe Size : 25 X 25 mm to 50 X 50 mm
- Power Rating : 0.50 HP to 3.00 HP

Material of construction :

- Casing, Impeller, Stuffing Box & Shaft - S.S. 316.
- Bearing Housing - Cast Iron

Application :

- Water Circulation Systems
- Sea Water Application
- Food Processing Industries
- Pharmaceuticals Industries
- Boiler Circulation System
- Mineral Water Plants
- Dairy Industries

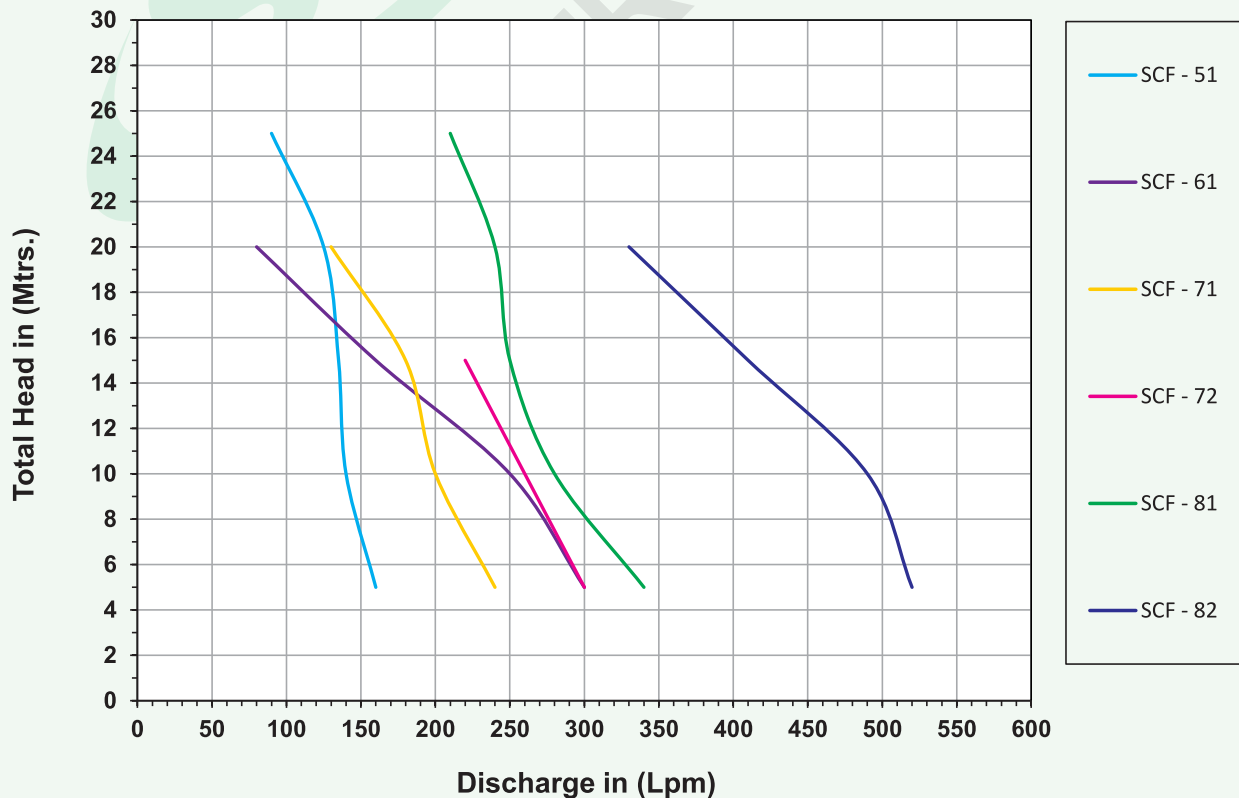


SETU INDUSTRIES

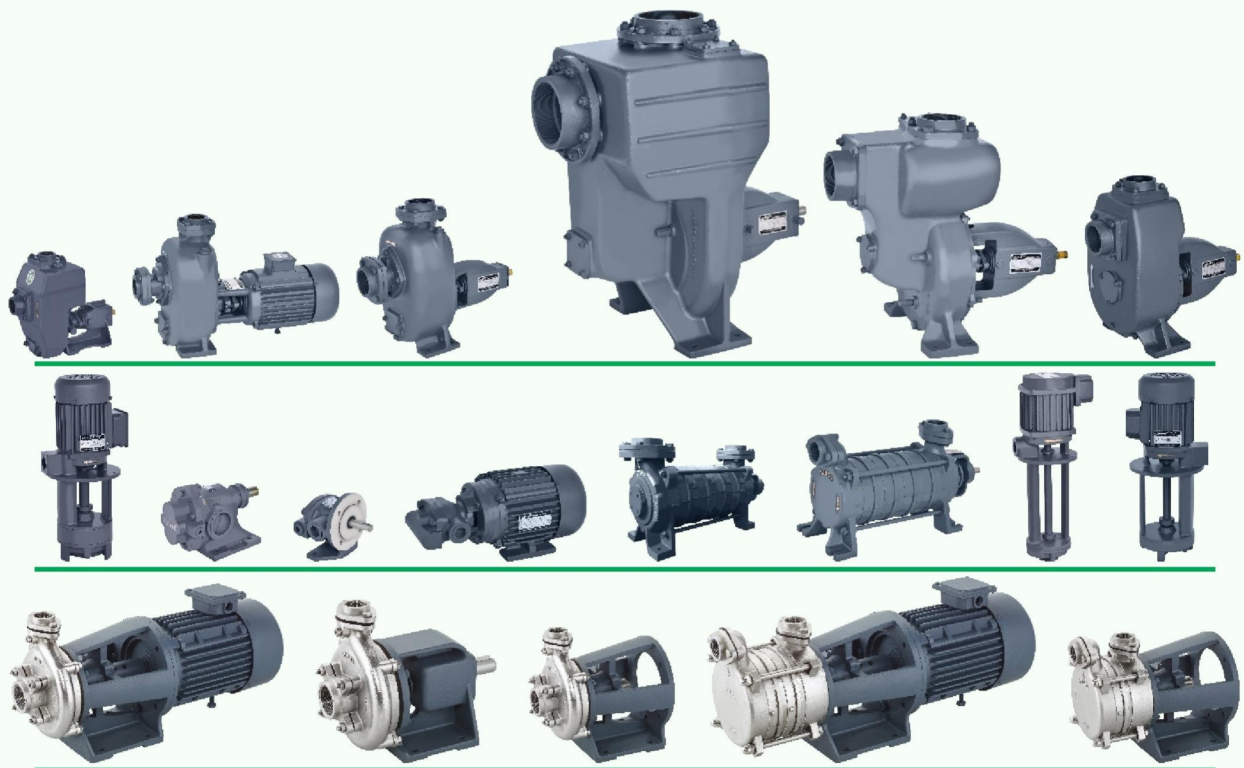
PERFORMANCE CHART WITH CURVE OF S.S. CENTRIFUGAL BARE PUMP

SR. NO.	MODEL	PIPE SIZE (mm)	SPEED (rpm)	MOTOR RATING		DUTY POINT HEAD (mtr.)	DISCHARGE IN (LPM)	TOTAL HEAD IN METRES				
				kW	HP			5	10	15	20	25
1	SCF - 51	25 X 25	2800	0.75	1.00	22	DISCHARGE IN (LPM)	160	140	135	125	90
2	SCF - 61	40 X 25	2800	1.10	1.50	18		300	250	160	80	
3	SCF - 71	40 X 40	2800	1.50	2.00	18		240	200	180	130	
4	SCF - 72	50 X 50	2800	1.50	2.00	15		300	260	220		
5	SCF - 81	40 X 40	2800	2.20	3.00	25		340	280	250	240	210
6	SCF - 82	50 X 50	2800	2.20	3.00	20		520	490	410	330	

Performance Curve Total Head Vs Discharge



SURGE[®]
INDUSTRIAL PUMPS




SETU INDUSTRIES


PUMP HOUSE

AUTHORISED DISTRIBUTOR: SURGE PUMPS
ADDRESS: 981 Dhiraj Niwas Nr. Mahakali Hotel,
Laheripura New Road Vadodara - 1(M) 98259 52159
E mail: pumphouse98@gmail.com